

Ongoing Government Shutdown Reaches Week Four

BY DANIELLE GRILLO
Staff Writer

On Oct. 1, the U.S. government shutdown after lawmakers failed to reach a budget agreement before the start of the new fiscal year. The federal funding lapse reflects the ongoing divide between Democrats and Republicans over whether to extend federal health care subsidies under the Affordable Care Act (ACA). As of press time, no agreement has been reached yet in Congress, leaving the government closed.

A government shutdown occurs when Congress is unable to pass appropriations bills that finance the operations of federal agencies and programs. The current shutdown centers around tax credits that have helped make healthcare more affordable for millions of Americans since the COVID-19 pandemic. At the end of this year, these subsidies are set to expire if Congress does not vote to extend them, which will affect low- and middle-income people who purchase healthcare under the ACA.

“While Democrats want to extend these subsidies, Republicans want to reduce or eliminate them, which will lead to higher insurance premiums,” said Dr. Isil Akbulut Gok, Interim Chair of the Political Science and Global Affairs Department at Sacred Heart University.

According to the Associated Press and data collected from the health care research nonprofit Kaiser Family Foundation (KFF), around 24 million people have signed up for health insurance this year through the Affordable Care Act. Without an extension of the tax credits, ACA enrollees could see their premiums increase by an estimated 114%, averaging \$1,016 next year, according to KFF.

Beyond the dispute over health care subsidies, the shutdown is affecting hundreds of thousands of federal employees and disrupting government operations. Traditionally, furloughed federal employees receive back pay once a shutdown ends, but this time, the current administration has indicated that reimbursement is not guaranteed. Additionally, the Office of Management and Budget reported in a court filing on Oct. 10 that over 4,100 federal employees from eight departments and agencies could be fired due to the shutdown, which is an unprecedented action.

“This current shutdown is somewhat different in its impact. For instance, the White House is now threatening permanent

layoffs, not just furloughs,” said Akbulut Gok. “This could lead to longer term job cuts and loss in the federal workforce and could have lasting damage on the economy.”

During the longest U.S. shutdown in 2019, which lasted 35 days, the Congressional Budget Office estimated that the Gross Domestic Product (GDP) fell by just 0.02%. Still, experts warn the current shutdown could affect consumer confidence and broader economic activity, as disruptions in federal services and delayed data could create ripple effects for businesses and households.

“One area to watch is consumer confidence. If this shutdown stretches longer than usual, public sentiment could weaken in ways that are harder to quantify or predict,” said Dr. Stephen Rubb, professor of Economics at SHU.

“We don’t have reliable data from the Bureau of Labor Statistics, so it makes it more difficult for businesses to make investment decisions, and even for the Federal Reserve to decide on interest rates,” said Dr. Lucjan Orłowski, professor of Economics at SHU.

This government shutdown reflects how political divisions in Congress can impede action on key issues that affect millions of Americans.

“Both parties are responsible for not being able to get a deal done. Republicans and Democrats have to work together, and right now, they are extremely divided,” said senior Timothy Toronto, vice president of College Democrats.

“It is very sad and concerning that both parties can’t come together to help the American people,” said junior Juliana Morello, president of College Democrats. “The American people should always come before a political party.”

Government shutdowns can also contribute to declining



Rahmat Gul, AP News

The U.S. Capitol on the tenth day of the ongoing government shutdown, in Washington on Oct. 10, 2025.

public confidence, as prolonged stalemates highlight the difficulty of getting Congress to fund and operate federal programs effectively.

“Historically, government shutdowns have a negative effect on public confidence in government and democratic institutions,” said Akbulut Gok. “Shutdowns highlight political gridlock and the failure of elected officials to compromise.”

Lawmakers continue negotiating to end the shutdown, hoping for a compromise on healthcare subsidies and federal funding to prevent further disruptions for workers, businesses and millions of Americans.

“Both sides have to be willing to compromise,” said Dr. Gary Rose, professor and Scholar in Residence of Political Science and Global Affairs at SHU. “Republicans need to compromise on the subsidies somewhat while Democrats have to realize that health care expenditures have risen to an incredibly high level and thus agree to trim down their demands on the subsidies.”

The Associated Press contributed to this article.

West Campus Welcomes “The Evans Family Atrium”

BY ARIANNA GIANOPOULOS
Staff Writer

As you walk into the lobby of West Campus and look at the wall, you may notice something different. What was once the West Campus Atrium is now named “The Evans Family Atrium,” named after two philanthropists whose involvement in education has impacted the Bridgeport youth.

The dedication ceremony was held on Sept. 19 and celebrated the couple’s enduring impact through the Horizons at Sacred Heart University (HSHU) program, a partnership they helped bring to life in 2011.

Brad and Barbara Evans are two Southport residents and have been advocates for expanding education. They first approached SHU nearly 15 years ago with an idea to establish a Horizons program on a university’s campus. Inspired by its mission to provide students with tutoring and community support, the Evans family sought out to expand Horizons and reach Sacred Heart.

“Their impact on Bridgeport youth and on Sacred Heart’s mission is immeasurable,” said Paul Sutera, senior vice president for university advancement. “They are two people who care, who do not want to be in the spotlight and just want to make a difference, make an impact.”

HSHU was founded in 2011 and began with a small group of elementary school students from Bridgeport. The program now serves more than 300 students from Pre-K through high school. HSHU offers year-round academic and enrichment programs which do more than help students with classes; they offer a nurturing space where children develop academic skills, confidence and curiosity. Alongside after

school clubs and tutoring, students take part in recreational and community-oriented events. Instruction ranges from reading and math to arts and other creative activities.

“The goal is to prevent summer learning loss and help students see college not as something far away but as part of their future,” said Sutera. “Horizons give them a step up early on — academically, socially and emotionally.”

Kristen Murphy-Mengold, associate vice President for university advancement and strategic initiatives, described HSHU as “a powerful partnership between SHU and the Bridgeport community.”

“Horizons perfectly embodies Sacred Heart’s mission to educate the whole person—mind, body, and spirit and its commitment to service, and community engagement. By empowering youth through education and mentorship, Horizons brings SHU’s core values of compassion, inclusion, and leadership through service to life,” said Murphy-Mengold.

Over the years, HSHU has become one of the largest Horizons programs in the country. Specifically, HSHU is ranked 16 of 50 programs in the U.S. Earlier this year, the university merged its program with the SHU-owned Notre Dame Prep High School, which doubled its size and expanded its impact to more students.

At the ribbon-cutting ceremony held for the newly named West Campus Atrium, SHU President Dr. John J. Petillo, board members, faculty, students and members of the Evans family gathered to celebrate this milestone. Petillo, Sutera and board member Mary-Ann Bunting all spoke about the Evans’ commitment to education and service.

According to Murphy-Mengold, the ceremony was “a joyful celebration of partnership,

See West Campus Welcomes “The Evans Family Atrium” continued on pg. 2

For more... shuspectrum.com  [@shuspectrum](https://www.instagram.com/shuspectrum)  [@TheSpectrumSHU](https://twitter.com/TheSpectrumSHU)  [@shuspectrum](https://www.tiktok.com/@shuspectrum)

P. 3 FEATURES | PAGE 3
“WALK TO END ALZHEIMER’S”

P. 4 CAMPUS LIFE | PAGE 5
NEW YORK V.S. BOSTON IN “FANDOMS AND RIVALRIES”

P. 6 A&E | PAGE 6
SHU’S “LIFE OF A SHOWGIRL” ERA

P. 7 SPORTS | PAGE 7
LOOK FORWARD TO BASKETBALL’S RETURN

News

Israel resumes ceasefire in Gaza and says aid deliveries will restart Monday

BY JOSEF FEDERMAN AND SAMY MAGDY
AP Newsroom

JERUSALEM (AP) — Gaza's fragile ceasefire faced its first major test Sunday as Israeli forces launched a wave of deadly strikes, saying Hamas militants had killed two soldiers, and an Israeli security official said the transfer of aid into the territory was halted.

The military later said it resumed enforcing the ceasefire, and the official confirmed that aid deliveries would resume Monday. The official spoke on condition of anonymity because he's not authorized to discuss the issue with the media.

A little over a week has passed since the start of the U.S.-proposed ceasefire aimed at ending two years of war. U.S. President Donald Trump said the ceasefire remained in place and "we want to make sure it's going to be very peaceful."

He told reporters aboard Air Force One on Sunday that Hamas has been "quite rambunctious" and "they've been doing some shooting." He suggested that the violence might be the fault of "rebels" within the organization rather than its leadership.

"It's going to be handled toughly but properly," he said. Trump did not say whether he thought the Israeli strikes were justified, saying "it's under review."

Vice President JD Vance said Sunday that he may visit Israel in the coming days.

"We're trying to figure it out," he told reporters, saying the administration wants to "go and check on how things are going." Regarding the ceasefire, he said that "there's going to be fits and starts."

Health officials said at least 36 Palestinians were killed across Gaza, including children. Israel's military said it struck dozens of Hamas targets after its troops came under fire.

A senior Egyptian official involved in the ceasefire negotiations said "round-the-clock" contacts were underway to de-escalate the situation. The official spoke on condition of anonymity because he wasn't authorized to speak to reporters.

Israeli Prime Minister Benjamin Netanyahu directed the military to take "strong action" against any ceasefire violations but didn't threaten to return to war.

Israel's military said militants had fired at troops in areas of Rafah city that are Israeli-controlled according to agreed-upon ceasefire lines.

Hamas, which continued to accuse Israel of multiple ceasefire violations, said communication with its remaining units in Rafah had been cut off for months and "we are not responsible for any incidents occurring in those areas."

Strikes in Gaza

Palestinians feared war would return to the famine-stricken territory where Israel cut off aid for over two months earlier this year after ending the previous ceasefire.

"It will be a nightmare," said Mahmoud Hashim, a father of five from Gaza City, who appealed to U.S. President Donald Trump and other mediators to act.

Al-Awda hospital said it received 24 bodies from several Israeli strikes in the Nuseirat and Bureij camps in central Gaza.

An airstrike on a makeshift coffeehouse in Zawaida town in central Gaza killed at least six Palestinians, according to Gaza's Health Ministry, part of the Hamas-run government. A strike in Beit Lahiya in the north killed two men, according to Shifa hospital.

Another strike hit a tent in the Muwasi area of Khan Younis in the south, killing at least four people, including a woman and two children, according to Nasser Hospital.

"Where is peace?" said Khadijeh abu-Nofal in Khan Younis, as hospital workers treated wounded children. She accompanied a young woman hurt by shrapnel.

More bodies of hostages identified

Israel identified the remains of two hostages released by Hamas overnight: Ronen Engel, a father from Kibbutz Nir Oz, and Sonthaya Oakkharasri, a Thai agricultural worker from Kibbutz Be'eri.

Both were believed to have been killed during the Hamas-led attack on southern Israel on Oct. 7, 2023, which sparked the war. Engel's wife, Karina, and two of his three children were kidnapped and released in a November 2023 ceasefire.

Hamas in the past week has handed over the remains of 12 hostages.

Its armed wing, the Qassam Brigades, said it found the body of another hostage and would return it Sunday "if circumstances in the field" allowed. It warned that any escalation by Israel would hamper search efforts.

Israel on Saturday pressed Hamas to fulfill its ceasefire role of returning the remains of all 28 deceased hostages, saying the Rafah border crossing between Gaza and Egypt would stay closed "until further notice." It was the only crossing not controlled by Israel before the war.

Hamas says the war's devastation and Israeli military control of certain areas have slowed the handover. Israel believes Hamas has access to more bodies than it has returned.

Israel has released 150 bodies of Palestinians back to Gaza, including 15 on Sunday, according to Gaza's Health Ministry. Israel has neither identified the bodies nor said how they died. The ministry posts photos of bodies on its website to help families attempting to locate loved ones. Some are decomposed and blackened. Some are missing limbs and teeth.

Only 25 bodies have been identified, the Health Ministry said.

Israel and Hamas earlier exchanged 20 living hostages for more than 1,900 Palestinian prisoners and detainees.

Ceasefire's second phase

A Hamas delegation led by chief negotiator Khalil al-Hayya arrived in Cairo to follow up the implementation of the ceasefire deal with mediators and other Palestinian groups.

The next stages are expected to focus on disarming Hamas, Israeli withdrawal from additional areas it controls in Gaza, and future governance of the devastated territory. The U.S. plan proposes the establishment of an internationally backed authority.

Hamas spokesman Hazem Kasseem said late Saturday that the group has begun discussions to "solidify its positions." He reiterated that Hamas won't be part of the ruling authority in a postwar Gaza, and called for the prompt establishment of a body of Palestinian technocrats to run day-to-day affairs.

For now, "government agencies in Gaza continue to perform their duties, as the (power) vacuum is very dangerous," he said.

The Israel-Hamas war has killed more than 68,000 Palestinians, according to Gaza's Health Ministry, which doesn't distinguish between civilians and combatants in its count. The ministry maintains detailed casualty records that are seen as generally reliable by U.N. agencies and independent experts. Israel has disputed them without providing its own toll.

Thousands more people are missing, according to the Red Cross.

Hamas-led militants killed around 1,200 people, mostly civilians, and abducted 251 people in the attack that sparked the war.

Magdy reported from Cairo. Chris Megerian contributed reporting from Air Force One.

West Campus Welcomes "The Evans Family Atrium"

BY ARIANNA GIANNOPOULOS
Staff Writer

CONTINUED FROM PG 1

generosity and impact."

"Having the atrium named after the Evans family is a powerful reminder of the lasting impact of generosity and shared purpose. It symbolizes the importance of community engagement and lifelong learning and opportunity," said Murphy-Mengold.

Sacred Heart often honors its most dedicated benefactors by naming facilities, departments, or scholarships in their honor. According to Sutera, this tradition reflects SHU's values

"We want to associate with high-character, high-quality individuals and companies. And so, honoring a family and a legacy like the Evans is, in this example, they're stand-up, high-character, high-quality people and having an institution that shares their thanks in what they've done and the impact they've made is part of our mission of celebrating."

For the Evans family, the recognition is not an ending but a continuation of their commitment to the community.

"I think this is the beginning," said Sutera. "This is an opportunity for more to learn, appreciate, know, and get involved in its mission because its mission vision quite aligned nicely with Sacred Heart."

As for Murphy-Mengold, what stands out most from her work with HSHU is witnessing the transformation of its students.

"Some scholars arrive shy or hesitant at first, unsure of themselves in a new environment," said Murphy-Mengold. "As the weeks go on, you see them come out of their shells, raising their hands in class, diving into new activities, and building friendships that give them a sense of belonging."

"I think that in many cases, donors being recognized through facilities being named after them is a really great tribute to the valuable donation that they have

given," said senior Sophie Ianelli. "It is a good way to recognize the individuals who have given resources for an organization to create a facility, and I think it is not too forward of a sign of respect to the donor."



Daniel Passapera, Sacred Heart University

The ribbon cutting for the new name of the West Campus Atrium on Sept. 19, 2025.

Features

Step by Step: The Walk to End Alzheimer's

BY MACKENZIE FLYNN
Staff Writer

On Oct. 18, the Walk to End Alzheimer's took place at Chapel Quad. Hundreds of students, faculty, staff and supporters raised significant funds to help support research and critical care for those living with Alzheimer's and their caretakers.

"Supporting causes not only helps raise funds for research and support services but brings people together as a community to show people they are not alone in the fight," said Dr. Rui Liu, assistant professor of Health Sciences.

Alzheimer's is a disease that affects seven million people living in the U.S., and there are even more caretakers to account for. It kills one in three seniors, more people than prostate and breast cancer combined.

"Alzheimer's is not a part of the normal aging process. It affects thinking ability, behavior and daily activities," said Liu.

Alzheimer's starts in your system 20 years before you even notice symptoms. Even so, results and diagnoses can take significant time to be revealed.

Each person who walks has their own story. Some have relatives and loved ones who are living with or lived with the disease. Some are caretakers and some are living with the disease themselves.

"My grandmother was a very sophisticated woman living in Manhattan in the 50s and 60s, working at the Flatiron Building," said Cheryl Podob, Development Manager for Fairfield County. "30 years later, in the blistering hot summer, she stood in front of the mirror putting on a fur coat."

Bobbi Tar, Chair of Event Experience for the Alzheimer's Association Connecticut Chapter, shares how she first got involved in the association.

"In 2013, I was notified that something was wrong with my mom. We didn't know exactly what it was, but later exams revealed it was some sort of dementia," said Tar. "Sometime later, we were able to pinpoint the disease as Alzheimer's."

"My friend knew what I was going through and invited me to the local Walk to End Alzheimer's. It was such a special event and, before I knew it, I had signed up for the planning committee for the next walk," said Tar. "It was my way of giving back for my mom."

Today, Tar has received the American Association of Retired Persons (AARP) award for #1 volunteer in the state of Connecticut.

The Alzheimer's Association Connecticut Chapter raises funds year-round. They provide vital information, such as who to call for support and what services are available to individuals. They are currently offering Trial-Match clinical trials that connect individuals living with cognitive impairment, caregivers, and healthy participants with current research studies.

"You can call 1(800)-272-3900 at any time and you will be answered by a master level clinician, 24 hours, seven days a week," said Podob.

For those interested in getting further involved, the association is always looking for more student involvement and volunteer work. Although there is no internship posting, inquiries are welcomed.

"We are a very small staff, but we would love to add an intern if a dedicated student reached out to <https://www.alz.org/get-involved-now/volunteer> or emailed cspodob@alz.org," said Podob.

The office is located in Farmington, Conn., and events are put on year-round. All events are free, and the staff describe themselves as a family, so don't be afraid to ask questions and introduce yourself.

For students interested in the non-profit field, Liu shares her advice.

"Start with something you are passionate about and reach out to the organizations and non-profits. They are always looking for student involvement, and you will learn many skills that are not necessarily taught in the classroom," said Liu.



Alexis Barada, Staff Writer and Photographer

In the Promise Garden, flowers are placed to represent a promise to end Alzheimer's disease.

Navigating AI in the Classroom

BY NICHOLAS MAISANO
Staff Writer

"Artificial Intelligence (AI) is everywhere, and the danger is that we become desensitized to how much we use it," said Prof. Gregory Golda, assistant teaching professor of the School of Communications, Media and the Arts (SCMA).

AI has been an evolving technology over the past few years and has had a growing presence in education. Although it is new, how is it affecting both students and professors?

"Being a communications professor, I think it's really important that we don't close doors to opportunities with AI," said Golda.

Golda teaches a democratic technologies class, where his students do several projects to analyze AI tools and try to input and create something of value.

"The results are often lackluster, and when the students analyze it, they say that these things are really overhyped, and there's not really a lot of good stuff coming out of it," said



Daniel Passapera, Sacred Heart University

Staged photos in Sacred Heart University's AI Lab on Friday, June 6, 2025.

Golda.

Sophomore Caitlin Ciccone is a nursing major. She said that AI has helped her when she uses it for studying on her own.

"I am able to use my resources from class and have AI give me practice questions to get me ready for tests," said Ciccone. "I'd say I use it almost every day when I am studying, as it can give me infinite amounts of practice questions and practice tests that I can make mirror the types of questions I will see on exams."

"On the technical side, AI is incredibly useful for technical things and medical research. On the humanity side, I feel that it basically breaks our cognitive stream and short circuits the learning process," said Golda.

Sophomore and criminal justice major Luca Novellino said he uses AI to give him quick information about a question and then uses that information to make his own conclusions.

"I personally do not feel I am sacrificing any knowledge by using AI, but I know some other students use it as a crutch more than others, which can hurt them in the long run," said Novellino.

Sophomore and accounting major Matthew Gavagan said he uses AI as a tool to help check his work.

"I don't use it to complete assignments for me, but I will occasionally ask it to proofread my work after I review it once or twice," said Gavagan. "However, I just ask the AI to point out the errors so I can decide whether or not I actually want to make those changes."

Prof. Sidney Gottlieb, who teaches film studies and upper-level media courses in SCMA, said that he addresses AI in his syllabi and with his students regarding the work they do.

"Rather than get a ChatGPT summary of the readings assigned for the class, read them yourself carefully. Do that summary, take those notes, raise those questions, learn from it that way," said Gottlieb.

When it comes to teaching, Gottlieb said he still finds that the "old school" ways are still relevant today.

"I still see a lot of value in the old methods and the old purposes of education and learning," said Gottlieb.

While AI is likely to remain in education and evolve, opinions vary on whether it is hurtful or helpful to learning. Gottlieb is one that believes that learning should be left to humans without the use of AI.

"I'm worried that AI is doing things for us that we can do on our own, and a large part of our education centers on teaching us how to do those things without having somebody or something else do it for us," said Gottlieb.

**UPCOMING
EVENTS ON
CAMPUS**

**THURSDAY 10/23:
TAP PRESENTS "BARE"
7 P.M. ACADEMIC BUILDING
LITTLE THEATER**

**FRIDAY 10/24:
WOMEN'S ICE HOCKEY
V.S. SAINT MIKE'S
5 P.M. MARTIRE FAMILY
AREANA**

**SATURDAY 10/25:
SET'S DRIVE-IN
MOVIE
8 P.M. 63'S PATIO
LAWN**

CampusLife

Is Sports Betting Impacting College Students?

BY JAMES SCHINDLER
Staff Writer

“I have seen friends lose hundreds, if not thousands, in months due to gambling. Keep in mind these are broke college kids who struggle already to keep finances in order since most don’t have a job.” said junior Alex Achmetov.

Many adults already deal with gambling or sports betting and struggle to contain it. Now younger adults, including college students, are betting.

“It has become common around me, there are a lot of people that I know that do it on a regular basis.” said junior Robert Feulner. “I usually see people use Fliff or DraftKings.”

Fliff is a social sportsbook that uses virtual currency that can be used by anyone, even under the age of 21. You have to be 18 to deposit currency, at least \$50, into a bank account. Each account gets a free dollar to gamble per day.

DraftKings is one of three online sportsbooks available in Connecticut and is the sportsbook in the state’s biggest casino, Mohegan Sun.

In Connecticut, it is illegal to bet on college sports teams that are in the same state, but that does not stop people from betting on professional sports.

A problem many gamblers have is setting a limit, as betting apps have them available but do not have them required or even recommended. Some people gamble comfortably, in a range they are comfortable spending money on, while others can find themselves in financial trouble.

“I have seen friends in financial stress because of gambling to the point where they are asking to take a loan out from their family and friends to either buy something at school or to pay someone back,” said Achmetov.

People can see gambling as a fun way to watch sports, while others may not see it as a problem, but it can become destructive over time.

“If you are doing it in moderation, such as maybe throwing a few dollars on a sports game you are attending in person, or if you are watching the Stanley Cup, Super Bowl, World Series, etc., then in my opinion that is ok,” said Achmetov. “But if a person is gambling every day or most days of the week and is constantly stressing how they are going to make their money back from the night before, then that is a problem.”



AP Photo, David Derman
Betting kiosks are seen inside Caesars Sportsbook inside Rocket Mortgage FieldHouse, Thursday, Dec. 29, 2022, in Cleveland.

The National Collegiate Athletic Association (NCAA) has recently made a push to allow all college athletes to be able to gamble on professional sports. Division I personnel have accepted the change and are now waiting for divisions II and III to also accept for the change to be fulfilled.

“Yes, I feel like they should be able to,” said sophomore Brett Clowry.

The change would not affect the rule that college athletes are not allowed to sports bet on any collegian events as three players just this year were banned from the NCAA for betting on their own games against Fresno State University and San Jose State University.

The state of Connecticut offers many resources to help people of any age with gambling addiction, including a self-exclusion program that helps people with this addiction to distance themselves from gambling and ban themselves from all gambling in the state.

ONCE A **PIONEER**, ALWAYS A **PIONEER**

Earn your graduate degree at
SHU for a seamless transition and
unmatched experience.



Sacred Heart
UNIVERSITY



CampusLife

Sports Fandoms and Rivalries

BY ALEXA PISCINO
Staff Writer

Whether it's Sundays filled with football or winter nights spent watching hockey, Sacred Heart University students are never short on opinions about their favorite teams and the rivalries that come with them.

Based on the majority demographic of SHU students, the battle lines are clear: New York versus Boston.

"I believe there is a heavier domination of New York teams at Sacred Heart due to its location," said sophomore Nicholas Bosticco. "With SHU only being about an hour outside New York City, you hear a lot more about those teams compared to Boston."

Bosticco, who roots for the Yankees, Knicks, Rangers and Giants, said his fandom was shaped by family ties.

"My father and grandfather were both huge Rangers fans," said Bosticco. "Being a die-hard fan means you stick with your team through the bad years, not just when they're good."

Senior Caitlin Greenhall echoed that sentiment, saying her passion for sports started at home as well.

"I come from a very big hockey family," she said. "I follow the NHL year-round, even when they're not playing — I just like keeping up with the news."

Greenhall, a Boston Bruins and New York Yankees fan, said she's noticed the sports divide on campus.

"There's definitely a dominant sports culture tied to both New York and Boston," she said. "I've seen rivalries between Yankees and Red Sox fans, and also between Rangers and Devils fans. It's fun because it gives everyone something to talk about."

Junior Tyler Johnson said the NFL dominates his attention but added that his interests shift depending on the season.

"In the winter, I'm more into hockey, in the summer it's baseball into football, and fall is football season," said Johnson. "At SHU, I hear the most about the Yankees, Rangers, Knicks and Giants."

Johnson said he's noticed how regional ties shape fan bases.

"Even though you see both Boston and New York fans here, SHU is definitely in the New York region," he said. "Most of the big rivalries come from baseball — definitely Yankees and Red Sox — and sometimes Yankees and Mets."

For many, their sports identity comes down to family and hometown pride. Junior Morgan LiCausi said she's a die-hard White Sox and Blackhawks fan because of her Chicago roots.

"The teams I love aren't doing great right now," said LiCausi. "But I'll never be a bandwagon fan. I grew up in a baseball household, and that's what made me fall in love with the game."

While Sacred Heart's own Division I teams bring students together on campus, many agree that SHU athletics don't necessarily change their professional sports preferences.

"I wouldn't say SHU sports impact my overall sports preferences," said Greenhall. "But some games, especially hockey, really do feel like big events."

Johnson added that the atmosphere around SHU athletics has made him more interested in certain sports.

"I've definitely become more into hockey since coming to Sacred Heart," said Johnson. "It feels like if the team is doing well, everyone's paying attention."

When it comes to watching games, students say they often take matters into their own hands.

"I don't think SHU does a great job at organizing watch parties," said Bosticco. "They do advertise at Red's, but that's only for people over 21. Students usually make their own watch parties with friends — it's just as fun that way."

Even so, the shared passion for sports is what connects SHU's student body.

"It's like conventions," said Bosticco. "People go to connect with others who share the same interests. With sports, it's the same thing, just in a different atmosphere."

For Greenhall, it all comes back to community.

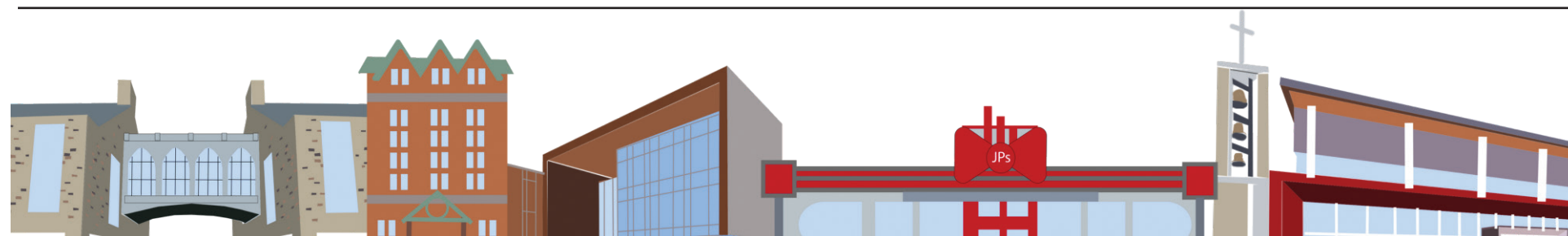
"Whether it's the Bruins or the Yankees, everyone here has a team," said Greenhall. "It's what keeps campus energy high — no matter who you root for."

Even so, the shared passion for sports is what connects SHU's student body.

"It's like conventions," said Bosticco. "People go to connect with others who share the same interests. With sports, it's the same thing, just in a different atmosphere."



A graphic posted to Instagram highlighting the rivalry between the Boston Red Sox and New York Yankees this season. Instagram, @bombers_coverage



Interested in contributing to Campus Life? Contact us at spectrum@sacredheart.edu

Arts & Entertainment

Thieves steal crown jewels in 4 minutes from Louvre Museum

BY THOMAS ADAMSON
AP Newsroom

PARIS (AP) — In a minutes-long strike Sunday inside the world's most-visited museum, thieves rode a basket lift up the Louvre's facade, forced a window, smashed display cases and fled with priceless Napoleonic jewels, officials said.

The daylight heist about 30 minutes after opening, with visitors already inside, was among the highest-profile museum thefts in living memory and comes as staff complained that crowding and thin staffing are straining security.

The theft unfolded just 250 meters (270 yards) from the Mona Lisa, in what Culture Minister Rachida Dati described as a professional "four-minute operation."

One object, the emerald-set imperial crown of Napoleon III's wife, Empress Eugénie, containing more than 1,300 diamonds, was later found outside the museum, French authorities said. It was reportedly recovered broken.

Images from the scene showed confused tourists being steered out of the glass pyramid and adjoining courtyards as officers closed nearby streets along the Seine.

A lift — which officials say the thieves brought and which was later removed — stood against the Seine-facing façade, their entry route and, observers said, a revealing weakness: that such machinery could be brought to a palace-museum unchecked.

A museum already under strain

Around 9:30 a.m., several intruders forced a window, cut panes with a disc cutter and went straight for the glass display cases, officials said. Interior Minister Laurent Nunez said the crew entered from outside using a basket lift via the riverfront facade to reach the hall with the 23-item royal collection.

Their target was the gilded Apollon Gallery, where the Crown Diamonds are displayed, including the Regent, the Sancy and the Hortensia.

The thieves smashed two display cases and fled on motorbikes, Nunez said. No one was hurt. Alarms brought Louvre agents to the room, forcing the intruders to bolt, but the theft was already done.

Eight objects were taken, according to officials: a sapphire diadem, necklace and single earring from a matching set linked to 19th-century French queens Marie-Amélie and Hortense; an emerald necklace and earrings from the matching set of Empress Marie-Louise, Napoleon Bonaparte's second wife; a reliquary brooch; Empress Eugénie's diadem; and her large corsage-bow brooch — a prized 19th-century imperial ensemble.

"It's a major robbery," Nunez said, noting that security measures at the Louvre had been strengthened in recent years and would be reinforced further as part of the museum's upcoming overhaul plan. Officials said security upgrades include new-generation cameras, perimeter detection, and a new security control room. But critics say the measures come far too late.

The Louvre closed for the rest of Sunday for the forensic investigation to begin as police sealed gates, cleared courtyards and shut nearby streets along the Seine.

Daylight robberies during public hours are rare. Pulling one off inside the Louvre with visitors present ranks among Europe's most audacious in recent history, and at least since Dresden's Green Vault museum in 2019.

It also collides with a deeper tension the Louvre has struggled to resolve: swelling crowds and stretched staff. The museum delayed opening during a June staff walkout over overcrowding and chronic understaffing. Unions say mass tourism leaves too few eyes on too many rooms and creates pressure points where construction zones, freight routes and visitor flows meet.

Security around marquee works remains tight — the Mona Lisa sits behind bulletproof glass in a climate-controlled case — but Sunday's theft also underscored that protections are not uniformly as robust across the museum's more than 33,000 objects.

The theft is a fresh embarrassment for a museum already under scrutiny.

"How can they ride a lift to a window and take jewels in the middle of the day?" said Magali Cunel, a French teacher from near Lyon. "It's just unbelievable that a museum this famous can have such obvious security gaps."

The Louvre has a long history of thefts and attempted robberies. The most famous came in 1911, when the Mona Lisa vanished from its frame, stolen by Vincenzo Peruggia and recovered two years later in Florence. Another notorious episode came in 1956, when a visitor hurled a stone at her world-famous smile, chipping paint near her left elbow and hastening the move to display the work behind protective glass.

Today the former royal palace holds a roll call of civilization: Leonardo's Mona Lisa; the armless serenity of the Venus de Milo; the Winged Victory of Samothrace, wind-lashed on the Daru staircase; the Code of Hammurabi's carved laws; Delacroix's Liberty Leading the People; Géricault's The Raft of the Medusa. The objects — from Mesopotamia, Egypt and the classical world to Europe's masters — draw a daily tide of up to 30,000 visitors even as investigators now begin to sweep those gilded corridors for clues.

Politics at the door

The heist spilled instantly into politics. Far-right leader Jordan Bardella used it to attack President Emmanuel Macron, weakened at home and facing a fractured parliament.

"The Louvre is a global symbol of our culture," Bardella wrote on X. "This robbery, which allowed thieves to steal jewels from the French Crown, is an unbearable humiliation for our country. How far will the decay of the state go?"

The criticism lands as Macron touts a decade-long "Louvre New Renaissance" plan — about €700 million (\$760 million) to modernize infrastructure, ease crowding and give the Mona Lisa a dedicated gallery by 2031. For workers on the floor, the relief has felt slower than the pressure.

What we know — and don't

Forensic teams are examining the site of the crime and adjoining access points while a full inventory is taken, authorities said. Officials have described the haul as of "inestimable" historical value.

Recovery may prove difficult. "It's unlikely these jewels will ever be seen again," said Tobias Kormind, managing director of 77 Diamonds. "Professional crews often break down and re-cut large, recognizable stones to evade detection, effectively erasing their provenance."

Key questions still unanswered are how many people took part in the theft and whether they had inside assistance, authorities said. According to French media, there were four perpetrators: two dressed as construction workers in yellow safety vests on the lift, and two each on a scooter. French authorities did not immediately comment on this.

Investigators are reviewing CCTV from the Denon wing and the riverfront, inspecting the basket lift used to reach the gallery and interviewing staff who were on site when the museum opened, authorities said.

Associated Press writer Jill Lawless in London contributed to this report.



Thibault Camus, AP Photo

A police car patrols in the courtyard of the closed Louvre museum after a robbery Sunday, Oct. 19, 2025 in Paris.

Taylor Swift's "Showgirl" Era

BY KATELYN TOTH
Staff Writer

Attention, *Swifties* — it's showtime! Taylor Swift's newest album, *The Life of a Showgirl*, released on Oct. 3, is already breaking records. Since its debut, the album has sold over four million units, including both traditional sales and streaming equivalents, making it the biggest release week in history.

Swift first announced the album back in August on her fiancé Travis Kelce's podcast, "New Heights." In her new album, Swift reveals the glamorous, bedazzled façade of the "life of a showgirl" to give fans a special look behind the curtain, offering a glimpse into her personal life, including her relationship with Kelce.

Swift created the album during her days off from the iconic Eras Tour with producers Max Martin and Shellback. The trio have a history of working together on hits like "Shake it Off," "Blank Space" and "Bad Blood" off of her Grammy-award winning album *1989*.

Unlike Swift's previous, fans say this album feels different. While the lead single, "The Fate of Ophelia," has climbed the charts and sparked widespread attention on social media, other tracks, like "Father Figure," "CANCELLED!" and "Wood," have received mixed reactions from fans, sparking debate over the album's creative direction and lyrical themes.

"She's known for her lyricism and having people relate to her songs," said junior Emily Nolan. "This album doesn't give the same heartfelt feeling and authenticity that Taylor usually has."

Many listeners see this album as a shift from Taylor's traditionally introspective and emotionally raw style, favoring a more playful and, at times, raunchy sound.

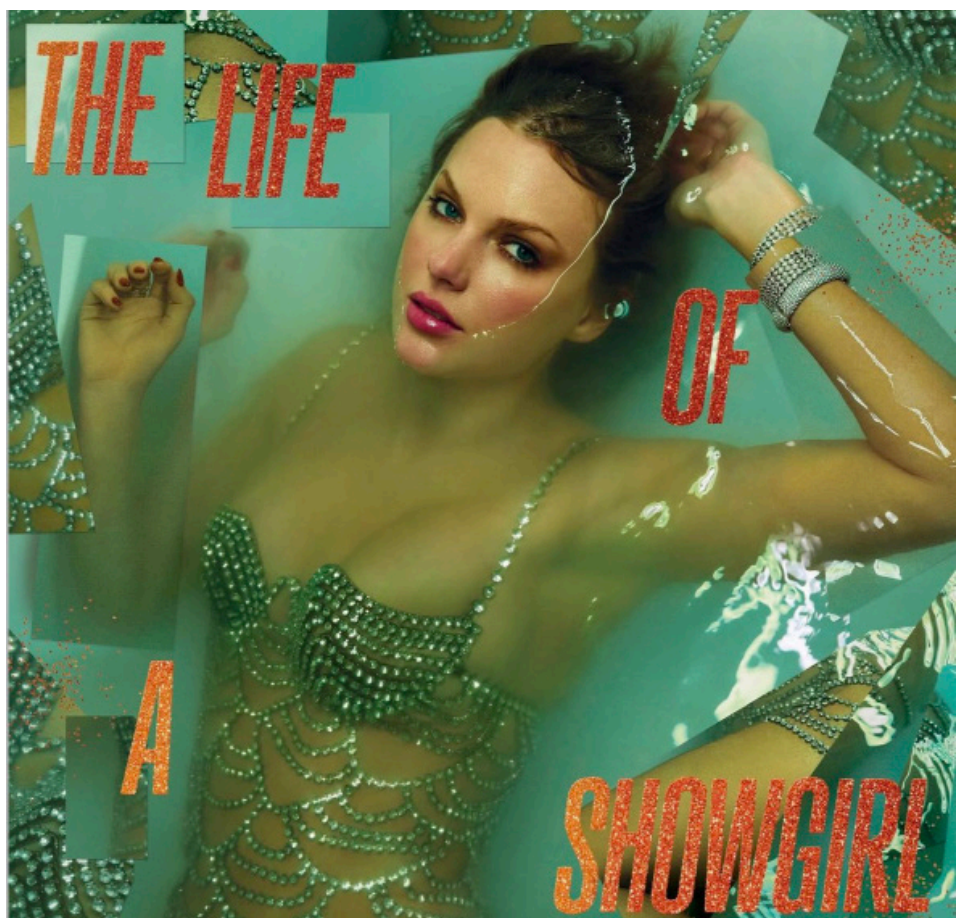
"I wish some of the songs were more gut-wrenching and jaw-dropping, but it is also nice to have an album with so many upbeat songs," said junior Elizabeth Llewelyn. "Taylor fans are not necessarily used to this, and I think that is why it is so controversial. The explicit content she sings about in these songs has stirred up controversy as she has never really sung about these things before."

However, some fans have embraced the shift, suggesting that the lyrics represent the new era of Swift's life, as she leaves her "tortured poet" era and steps into the spotlight as the "showgirl."

"A lot of people think her new album is cringey or just straight up not

good, but I totally disagree. The album is fun and an easy listen," said senior Samantha Millerick. "The problem with people judging this album is that they compare it to her lyricism on previous albums like *Folklore*, but she is in a completely different time in her life."

Emma Ricotta and Moira Staples contributed to this article.



Instagram, @taylorswift

Taylor Swift's new album cover of "The Life of a Showgirl".

Sports

Pioneers' Basketball Ready for Season Return

BY NICHOLAS DILAPI
Staff Writer

The men's and women's basketball teams each received multiple honors from the Metro Atlantic Athletic Conference (MAAC) entering the upcoming season.

Looking back to last season and their first year in the MAAC, the men's team made it to the second round of the conference tournament. They beat Fairfield University in the first round but then fell to Merrimack College in a second-round overtime loss.

Men's head coach Anthony Latina is hoping to make it even further this season. He believes in his players and thinks consistent improvement could be the key to exceeding last season's outcome.

"I think our guys know that you just got to keep having a consistent daily focus of getting better and hard work," said Latina.

The men's team has no shortage of talent. Senior forward Anquan Hill was named to the Preseason all-MAAC Team, while sophomore guards Mekhi Conner and Nyle Ralph-Beyer were named to the second and third teams, respectively.

"Without my teammates, I don't think I would be able to make it that far and be picked in any of those polls," said Conner.

"We have good enough players to be a factor and win the league," said Latina.

The team is now on the league's radar, after coming into last season with no expectations having just joined the MAAC.

"It shows how much the league fears us, they know we have really good players, but it's up to us to put it together to win this championship," said Hill.

The men's team is aiming for a conference championship this season and feels that they could be special this season.

"If we're not in the running for the regular season conference championship, that would be a disappointment," said Latina.

The men's team will start their season at the Pitt Center on Tuesday, Nov. 4 at 7:00 p.m., against the United States Merchant Marine Academy.

On the women's side, the Pioneers are led by coach Jessica Mannetti, who is entering her 12th season with the team.

To Mannetti, success is defined in a lot of different ways.

"For us, success is reconnecting back to the championship culture and



Contributed by Joshua Gee, '26

Sophomore guard Taj Bryant dribbling at practice.

mindset that our program is known for," said Mannetti. "Success for us could be determined through a relentless pursuit of excellence and effort this season."

Senior guard Amelia Wood was named to the preseason all-MAAC Third Team. Wood led the team in blocks per game and averaged the second most points and steals per game.

"I got to prove to myself that I deserved to be on the third team and even higher for the postseason picks," said Wood.

The team is hungry for success this season. Senior guard Sierra Johnson, who has started every game for the Pios each of the last two seasons, is amped for the season.

"There's nothing to hold back, it's my last year, just leave it all out there," said Johnson.

The women's team will open their season at the Pitt Center on Monday, Nov 3 at 7:00 p.m. against the New Jersey Institute of Technology.

Athletic Communications contributed to this article.

Club Rugby Dominates Fall Season

BY ANDREW RABER
Staff Writer

"Rugby is a sport that breathes camaraderie and support," said Gennaro Gelsi, head coach of the men's club rugby team. "When we get flowing and we move the ball quickly, we play a very exciting brand of rugby."

The men started their fall season off strong with three wins, each dominating the score with around a 50 point differential. They beat Central Connecticut State University 55-0 on Sept. 20, had a 69-10 win over Quinnipiac University on Sept. 27, and won 56-10 over Southern Connecticut State University on Oct. 19.

Their only loss came against Massachusetts Maritime Academy on Oct. 4, finishing with a final score of 64-26.



Instagram, @ryan.mastropaolo

Seniors Jeremy Suhr and Ryan Mastropaolo during a game for the Club Rugby Team.

"I think anytime you take a tough loss, it's about how you respond. For us, it is focusing on getting back to the fundamentals that made us so successful in the first two games. Communication, discipline and doing the little things right on the field," said Gelsi.

This is Gelsi's first year as head coach of the team, and he has already made a positive impact on the team.

"Everyone loves Gelsi. Everyone is bought in. Practices with him as our new coach have gone back to being the best part of my day," said senior captain Jeremy Suhr.

The Pioneer's record this season has significantly improved from last fall when the men went 1-3. Senior Ryan Mastropaolo credits their progress to the team's chemistry.

"We're a pretty close knit group of guys, and I think that correlates to on the field as well. Just being close off the field, hanging out, having a good brotherhood, it really shows that you have each other's backs on the field," said Mastropaolo.

Gelsi attributes the team's noteworthy record to an adopted "winning mentality" he has skilled his men with.

"For me, it's all about business. I tell them we're not allowed to celebrate until we win the championship. It's about business. We are there to do a job," said Gelsi.

"This is absolutely a team where if you are not bought into the same vision and want to win a championship, we don't really want you to play," said Suhr.

The team has one scheduled match remaining, although two more matches are possible, a semi-final and a championship game. The last scheduled match is Oct. 26 at the University of Hartford.

"These guys want to represent Sacred Heart. They want to have a winning team. They want to make their school proud," Gelsi said.

Athletic Communications contributed to this article.

Editorial

Meals That Matter

BY SARA HASENEY
Features Editor

In the state of Connecticut, roughly one in seven people face food insecurity. The Connecticut Foodshare is a nonprofit organization that works to lessen these numbers. By providing meals to those in need, their goal is to help people statewide with food assistance.

Carmel Amell, The Connecticut Foodshare's Corporate Giving Manager says through the help of volunteers, partners, and supporters, the organization was able to provide 45 million meals just in the last year.

"With the rising cost of groceries, inflation, and uncertain economic times, many families are struggling to make ends meet and put food on the table. Of the roughly 3.6 million people in the state of Connecticut, more than 14%, or 516,640 individuals are food insecure," said Amell.

The organization prioritizes giving people nutritious, balanced meals. Providing meals is important, but giving healthy options is also crucial to help those in need.

"We do our best to focus on ensuring access to healthy, balanced options. The food we distribute includes fruits, vegetables, shelf-stable pantry staples like canned goods, protein, and dairy," said Amell.

Amell said her role in an organization whose mission to help people is something that is very important to her. Being able to play a part in providing meals to people aligns closely with her values.

"Food is how we show love, how we care for others, we celebrate life's meaningful moments with family and friends over a meal. Being part of an organization that helps bridge that gap, bringing together people who want to help with those who need help truly feels like a blessing. I'm very thankful to have the opportunity to dedicate my time and skills to helping others," said Amell.

Senior Madeline Mangione attended a meal packing event hosted by Connecticut Foodshare and 9/11 Day, another nonprofit organization that works to turn Sept. 11 into a day of service.

"I attended the event to help with media coverage and it was so inspiring. Seeing hundreds of volunteers from different organizations come together to help pack meals was something I was happy to have seen," said Mangione.

The meal packing event on Sept. 11 at the Total Mortgage Arena in Bridgeport, Conn. hosted volunteers from different companies and organizations all over Connecticut to help pack meals for those in need.

"Just by walking in the venue I could feel the energy of positivity in the room. People were dancing, singing, and just happy to be helping people who needed meals. It definitely made me want to volunteer in the future," said Mangione.

The process to receive these meals is easily accessible. Connecticut Foodshare has over 100 mobile food pantry locations across the state where people can go to receive meals.

"No questions are asked, and no ID is required. You can see the full list of locations at ctfoodshare.org/mobile We also distribute food to 480+ agency partners which include food pantries, community kitchens, and shelters. Connecticut Foodshare also helps individuals apply to the Supplemental Nutrition Assistance Program (SNAP). This is what was formerly known as food stamps," said Amell.

Connecticut Foodshare has had over 6,300 volunteers within the last year. The organization encourages people to donate their time to help fight food insecurity within the state of Connecticut.

To view or sign up for volunteer opportunities, visit ctfoodshare.org/volunteer. For any questions, reach out to Carmen Ana Amell at camell@ctfoodshare.org or Luis Rodriguez-Porter at lrodriguez-porter@ctfoodshare.org.



Instagram, @ctfoodshare

More than 400 volunteers came together for the inaugural Bridgeport Meal Pack Day for 9/11 at Total Mortgage Arena.

The editorial page is an open forum. Editorials are the opinions of the individual editors and do not represent the opinions of the whole editorial board. Letters to the editor are encouraged and are due by Sunday at noon for consideration for each Wednesday's issue. All submissions are subject to editing for spelling, punctuation, and length.

Letters to the editor should not exceed 700 words and should be emailed to spectrum@sacredheart.edu. The Spectrum does not assume copyright for any published material. We are not responsible for the opinions of the writers voiced in this forum.

EDITOR IN CHIEF
GEORGE TRIEBENBACHER
2026

MANAGING EDITORS
SHANNON TUTTLE
2026

MOIRA STAPLES
2026

COPY EDITOR
MADISON CONKLIN
2026

NEWS EDITOR
DANIEL GREENE
2026

ASST. NEWS EDITOR
MADELEINE MEDEIROS
2028

FEATURES EDITORS
SARA HASENEY
2026

ALEXA BORNER
2027

ASST. FEATURES EDITOR
FERNANDA GUEVARA
2026

ARTS & ENTERTAINMENT EDITOR
EMMA RICOTTA
2026

ASST. ARTS & ENTERTAINMENT
EDITOR
ALEXIS BARADA
2026

MIA COPPOLA
2027

SPORTS EDITOR
COLLIN MACLEOD
2027

ASST. SPORTS EDITORS
TAYLOR MAGUIRE
2027

JACK CAVICCHI
2027

CAMPUS LIFE EDITOR
THEO WEISMANN
2026

AUDREY'S CORNER EDITOR
WILL MORGAN
2028

SENIOR PHOTOGRAPHY EDITOR
JACK CAVICCHI
2027

PHOTOGRAPHY EDITOR
JORDAN DORSEY
2026

ASST. PHOTOGRAPHY EDITOR
JAYDEN HUNTER
2027

PUBLIC RELATIONS MANAGERS
SARA HASENEY
2026

ALEXA BORNER
2027

WEB MANAGER
JORDAN DORSEY
2026

CIRCULATION MANAGER
FERNANDA GUEVARA
2026

FACULTY ADVISOR
PROF. JOANNE KABAK

SPECTRUM IS PRINTED BY:
VALLEY PUBLISHING
Derby, Conn.